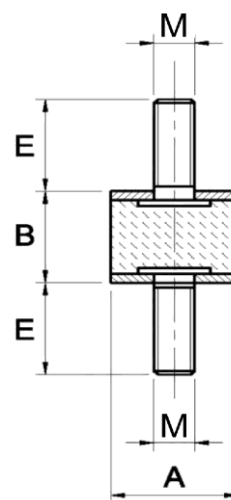


BL/A

Cilindrični dušilec vibracij iz poncinkanega jekla z moškim navojem

Zinc Plated Dobule Male Cylindrical Mounting

ARTIKEL Item	A	B	M	E	Največja kompresijska obremenitev (Max Compression Load) daN	Strižna obremenitev (Shear Load) daN
BL/A 10x10 M4	10	10	04	10	4	1
BL/A 10x10 M4	10	10	04	12	4	1
BL/A 10x15 M4	10	15	04	10	5	1
BL/A 10x10 M4	10	15	04	12	5	1
BL/A 13x10 M5	13	10	05	10	15	2
BL/A 15x10 M4	15	10	04	10	15	2
BL/A 15x15 M4	15	15	04	14	15	2
BL/A 15x15 M4	15	15	04	19	15	2
BL/A 15x20 M4	15	20	04	10	17	2
BL/A 15x30 M4	15	30	04	12	18	2
BL/A 16x10 M5	16	10	05	12	20	2
BL/A 16x20 M5	16	20	05	12	15	2
BL/A 20x10 M6	20	10	06	16	36	3
BL/A 20x15 M6	20	15	06	16	34	4
BL/A 20x15 M6-18	20	15	06	18	34	4
BL/A 20x20 M6	20	20	06	16	34	2
BL/A 20x20 M6-18	20	20	06	18	34	2
BL/A 20x25 M6	20	25	06	16	24	3
BL/A 20x30 M6	20	30	06	16	24	5
BL/A 20x30 M6-18	20	30	06	18	24	5
BL/A 25x10 M6	25	10	06	20	35	5
BL/A 25x15 M6	25	15	06	18	35	5
BL/A 25x20 M6	25	20	06	18	45	5
BL/A 25x25 M6	25	25	06	18	40	5
BL/A 25x30 M6	25	30	06	18	34	3
BL/A 25x20 M8	25	20	08	20	45	5
BL/A 25x30 M8	25	30	08	20	34	3
BL/A 30x10 M6	30	10	06	18	40	4
BL/A 30x30 M6	30	30	06	18	60	7
BL/A 30x15 M8	30	15	08	23	42	9
BL/A 30x20 M8-15	30	20	08	15	66	9
BL/A 30x20 M8	30	20	08	23	66	9
BL/A 30x25 M8	30	25	08	20	66	9
BL/A 30x30 M8	30	30	08	23	61	7
BL/A 30x40 M8	30	40	08	23	55	5
BL/A 40x20 M8	40	20	08	23	63	12
BL/A 40x25 M8	40	25	08	23	50	10
BL/A 40x30 M8	40	30	08	23	98	15
BL/A 40x35 M8	40	35	08	23	88	13
BL/A 40x40 M8	40	40	08	23	100	13
BL/A 40x45 M8	40	45	08	23	100	13
BL/A 40x50 M8	40	50	08	23	110	13
BL/A 40x30 M10	40	30	10	28	98	15
BL/A 40x40 M10	40	40	10	28	107	13
BL/A 50x40 M8	50	40	08	25	143	17
BL/A 50x20 M10	50	20	10	28	168	21
BL/A 50x25 M10	50	25	10	28	170	22



Tehnični podatki

Material: NR/SBR

Trdota: 60 ShA

Toleranca trdote: +/- 5 Sh

Kovinski del: poncinkan vijak in podložka

Standardni navoj: vijak pritrjen na podložko

Product specification

Main part material: NR/SBR

Standard hardness: 60 ShA

Hardness tolerance: +/- 5 SH

Metallic part: Zinc plated screw and washer

Standard thread: Screw pressed on the washer

ARTIKEL Item	A	B	M	E	Največja kompresijska obremenitev (Max Compression Load) daN	Strižna obremenitev v (Shear Load) daN
BL/A 50x30 M10	50	30	10	28	158	19
BL/A 50x40 M10	50	40	10	28	143	17
BL/A 50x45 M10	50	45	10	28	136	16
BL/A 50x50 M10	50	50	10	28	133	13
BL/A 50x60 M10	50	60	10	28	140	13
BL/A 60x25 M10	60	25	10	28	150	15
BL/A 60x30 M10	60	30	10	28	172	36
BL/A 60x35 M10	60	35	10	28	200	20
BL/A 60x50 M10	60	50	10	35	199	24
BL/A 60x60 M10	60	60	10	28	205	24
BL/A 60x30 M12	60	30	12	37	172	36
BL/A 60x40 M12	60	40	12	37	169	28
BL/A 60x50 M12	60	50	12	37	199	24
BL/A 65x35 M12	65	35	12	37	300	46
BL/A 65x50 M12	65	50	12	37	230	23
BL/A 70x40 M10	70	40	10	28	230	40
BL/A 70x50 M10	70	50	10	28	210	55
BL/A 70x50 M12	70	50	12	37	230	55
BL/A 75x50 M10	75	50	10	28	300	55
BL/A 75x25 M12	75	25	12	37	382	89
BL/A 75x40 M12	75	40	12	37	377	79
BL/A 75x50 M12	75	50	12	37	372	69
BL/A 80x40 M12	80	40	12	37	385	79
BL/A 100x30 M16	100	30	16	42	700	110
BL/A 100x40 M16	100	40	16	42	685	99
BL/A 100x50 M16	100	50	16	42	560	99
BL/A 100x55 M16	100	55	16	42	635	79
BL/A 100x60 M16	100	60	16	42	587	49

